

### At A Glance:

- Rated Capacity - 8,000 pounds
- Vertical Reach - 26 feet
- Horizontal Reach - 19 feet
- Continuous Rotation
- Carry Deck
- Hydraulic Outriggers

**BMC<sup>®</sup> BRODERSON<sup>®</sup>**  
Manufacturing Corp.

P.O. Box 14770, Lenexa, KS 66285-4770  
(913) 888-0606 • FAX (913) 541-0690  
• FAX (913) 888-8431 (Sales)

# IC-35-2B

LOAD RADIUS FEET	MAIN BOOM CAPACITY IN POUNDS							
	360° ROTATION				OVER FRONT			
	ON RUBBER		ON OUTRIGGERS		ON RUBBER		ON OUTRIGGERS	
4	5000	8000	6700	8000				
5	4000	6800	5800	6800				
6	2850	5850	5100	5850				
8	1800	4150	3500	4150				
10	1250	3200	2350	3400				
12	900	2350	1750	2850				
14	700	1850	1350	2450				
16	600	1500	1100	2150				
18	500	1250	950	1950				
19	450	1150	900	1850				
20	400	1100	850	1600				
22	300	900	700	1450				
24	250	800	600	1300				
26	200	700	500	1150				
27	150	650	450	1100				
BOOM ANGLE	0°	10°	20°	30°	40°	50°	60°	70°
+ 0°	1100	1200	1300	1450	1600	1850	2300	3500
* 15°	—	—	1100	1250	1350	1500	1700	2050
* 30°	—	—	—	1100	1200	1300	1450	1600

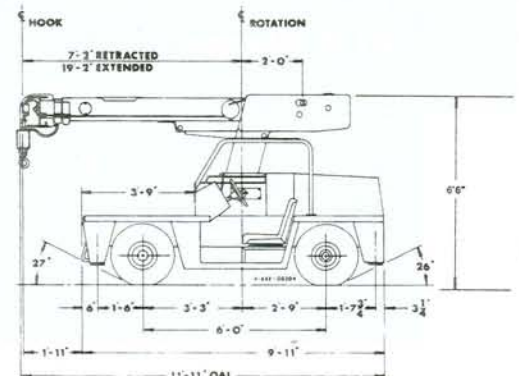
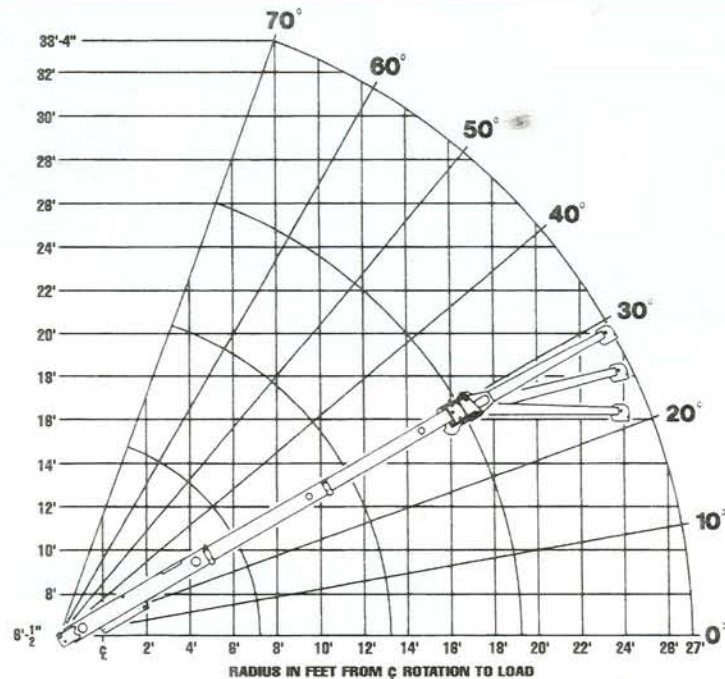
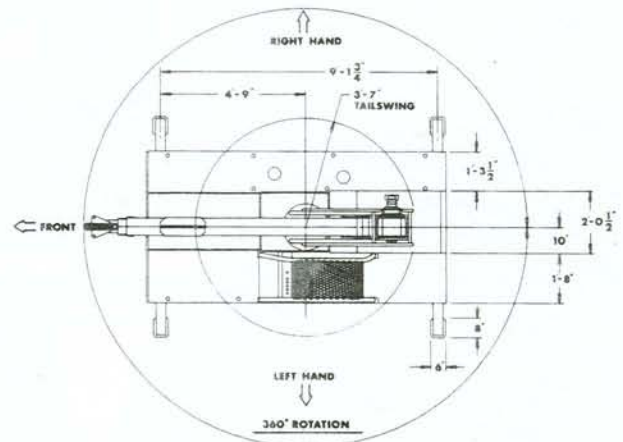
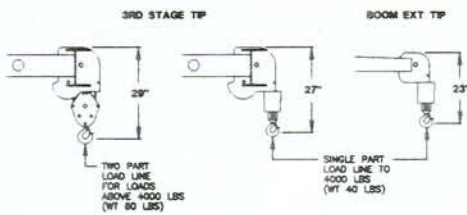
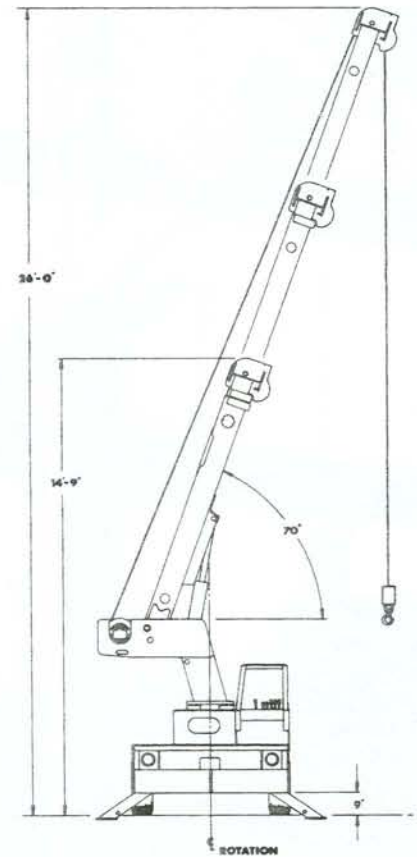
+ Use 0° for straight boom extension.

\* Use 0°, 15° or 30° for offset boom extension.

Boom extension loads must not exceed main boom capacity.

Capacities on outriggers are 85% of tipping loads. Capacities on rubber are 75% of tipping loads. Capacities below BOLD line are limited by tipping. Other capacities are limited by structural or hydraulic capabilities.

Caution: Boom extension loads must not exceed main boom capacity. Boom extension deduct: 100 lbs. when stowed on base boom, 300 lbs. in work position with load on main boom.



## General:

Weight:	
IC-35-2B	7,100 pounds
Travel Speed	0 to 10 MPH
Drawbar Pull	2,300 pounds
Gradeability	31% (17 Degrees)

Engine:	Standard	Optional
Make	Ford	Perkins
Model	VSG413	104.19-IDI
Type	Gas	Diesel
No. of Cylinders	4	4
Displacement	79 CID	122 CID
HP @ Governed Speed	42 HP	42 HP
Fuel Tank Capacity	13.5 Gallons	

## Hydrostatic Pump:

Piston type, driveline driven from engine crankshaft.  
Maximum flow 36 GPM, maximum pressure 4,000 PSI.

## Axles:

### Front Drive Axle:

Contains torque hubs and hydraulic drive motors.  
Axle oscillates a total of 1-1/2".

### Rear Steering Axle:

Fixed rigid to frame

## Steering:

Full hydraulic unit with one double-acting 2-1/2" cylinder attached to rear axle.

## Brakes:

Primary braking from hydrostatic transmission. Front actuated disc service brake built into each torque hub. Overcenter park brake lever provided.

## Tires:

7.50 x 10 pneumatic, 16-ply rating, front & rear.

## Outrigger:

Four hydraulic outriggers with box beam construction. Hydraulic cylinders are equipped with direct-connected holding valves.

## Cargo Deck:

29 sq. ft. deck area, 6,000 pounds capacity over front axle.

## Pulling Eye:

Mounted on front bumper.

## Electrical:

### 12 Volt System

### Lighting Group:

1 pair headlights & 1 pair taillights.

### Instrument Group:

Fuel, ammeter, oil pressure, water temperature, hydrostatic oil temperature gauges, hourmeter. Gauges are lighted.

### Back-Up Alarm:

Provides pulsating sound when transmission is in reverse.

## Hydraulic System:

Tandem pump mounted to rear of hydrostatic piston pump. Delivers 6 GPM at 2,600 PSI for boom circuits & 18 GPM at 2,250 PSI for hoist circuit. System protected by relief valves. Hydraulic oil tank has 14 gallons capacity. Hydraulic oil cooler provided.

## Crane:

### Boom Movement:

Rotation: Continuous Rotation  
Elevation: 0 to 70 Degrees  
Extension: 7' 2" to 19' 2"

### Boom Speeds:

Rotation: 1.5 RPM  
Elevation: 19 seconds  
Extension: 36 seconds

### Boom Assembly:

Three-section boom assembly equipped with bearing pads, double-acting hydraulic cylinders equipped with direct-connected holding valves and boom angle indicators on each side of boom.

### Hydraulic Hoist:

Turret mounted, planetary gear hoist, hydraulically powered with bare drum line pull of 4,600 lbs. and a line speed of 86 FPM. Hoist includes 85 ft. of 3/8 inch wire rope, downhaul weight, swivel hook and sheave block for 2-part line.

### Boom Rotation:

Heavy-duty ball bearing rotation gear with external teeth. Rotation is powered by hydraulic motor and worm gear drive.

### Anti-Two-Block Device with Trip Arm:

Prevents damage to hoist rope and/or machine components. Dumps hydraulics for Hoist Raise, Telescope Extend and Boom Lower.

# IC-35-2B

Listed below are brief descriptions of each option available for the IC-35-2B Industrial Crane.  
Consult the IC-35-2B Engineering Spec for additional information on each option.

## Models:

- IC-35-2B Industrial Crane with 7' 2" to 19' 2" Boom.

## Engine:

- **LP Gas System Kit**  
Contains all necessary components for LP Gas.
- **Dual Fuel System Kit**  
Contains all necessary components to burn LPG or gasoline.
- **Perkins Diesel Engine**  
Perkins Model 104.19-IDI.
- **Spark Arrester Muffler**  
Installed in addition to standard muffler.
- **Engine Shutdown Gauges**  
Shuts engine off when high water temperature or low engine oil pressure occurs.

## Tires:

- **Solid Rubber Tires**  
For applications where hazardous ground conditions exist.
- **Foam Filled Tires**  
Standard tires foam filled to prevent flats.
- **Spare Tire & Wheel**  
7.50 x 10, 16-ply (front & rear wheels different).

## Chassis:

- **Auxiliary Winch**  
Mounted behind front bumper, hydraulically driven with control in operators console (3,000 lbs. @ 20 FPM).
- **Pintle Hook - Rear**  
Holland "T-60-A" pintle hook mounted on rear of frame. 5-ton capacity
- **Lifting Rings**  
Consists of four rings, one at each corner of the load deck.

- **Lifting Sling**  
Sling to attach to Lifting Rings.
- **Headlight & Taillight Grilles**  
Welded steel protective grilles for headlights and taillights.
- **Individual Outrigger Controls**  
Consists of extra valve sections and two control handles to provide control to each outrigger.

## Operator Compartment:

- **All Weather Cab**  
Rigid-mounted canopy section & removable hinged door. Cab door adds 4 inches to crane width. Includes heater, windshield wiper, defroster fan, dome light & sliding window in door. Cannot be used with Operator Guard.
- **Cab Enclosure**  
Consists of rigid mounted canopy section with laminated glass front & top. Includes windshield wiper and dome light. Does not include door, heater or defroster fan.
- **Cab Heater**  
Heater with two-speed fan, for units without All Weather Cab.
- **Operator Guard**  
Tubular steel weldment with heavy expanded steel mesh top section.
- **Operator Guard Cover**  
Clear vinyl cover to go over Operator Guard, for inclement weather operations.
- **Floor Mat**  
Vinyl mat with foam backing.

## Electrical:

- **Outrigger Alarm System**  
Two-tone alarm is activated when "Outrigger Down" controls are operated.
- **Strobe Lights**  
Two yellow strobe lights mounted to turntable.

- **Boom Work Lights**  
One work light mounted to boom to light boom tip and one work light mounted to turret.
- **Boom Work Light & Strobes**  
Boom work lights and strobes installed.

## Wire Rope:

- **Wire Rope Extra Long**  
140 ft. of 3/8" dia.

## Boom Attachments:

- **Boom Extension**  
8 foot, boom stowable.
- **Boom Extension, Offset**  
8 foot, boom stowable, except the boom extension is offsettable to 3 different positions, 0 degree (inline), 15 degree and 30 degree offset.
- **Searcher Hook**  
2,000 pound capacity. Swivel hook with spring latch hangs from support structure projecting outward from boom tip.
- **Load Moment Indicator**  
Warns operator of impending over-load with audible and visual signals. Prevents overload by stopping boom functions that cause overloads. Readouts for load, boom angle, boom length and load radius.
- **Load Indicator**  
Three sheave load sensor on top of boom. Readout on top of instrument panel.

Should you, as an end user, require an option or special equipment on your IC-35-2B that is not listed on our sales literature, please contact your dealer salesperson or the factory to receive a special quoted price.